

Control System for 22 Workstations

NEW



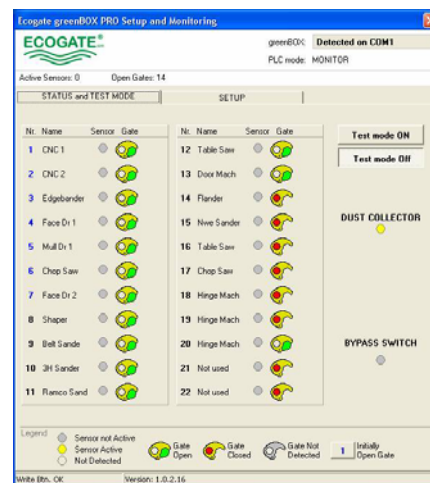
Ultimate in Dust Collecting

greenBOX PRO+ works with inverter

<p><i>"It's like having a new dust collecting system"</i></p>	<p>The greenBOX PRO+ unit automatically closes ecogates at machinery which isn't working, and continually optimizes the amount power supplied to your dust collector via inverter.</p>
<p>UPGRADE AN EXISTING OVERCROWDED DUST COLLECTING SYSTEM</p>	<p>If your plant has expanded and you are left with an undersize dust collector, the ECOGATE PRO+ System can greatly improve system performance, without the expense of making your system bigger (and you will save on electricity cost).</p>
<p>NEW SYSTEM</p>	<p>Your new dust collector can be designed 40% smaller than the standard design, or you can use conventional design size and this allows for 40% expansion later.</p>



Control unit greenBOX PRO+, EG103an



Ecogate Setup and Monitoring software

© 2001 - 2005, ECOGATE Inc., 1821 Tyburn St., CA 91204, U.S.A., 1-888-ECOGATE
 Phone: 818- 547 4007, Fax: 818- 547 4005, www.ecogate.com, Email: info@ecogate.com

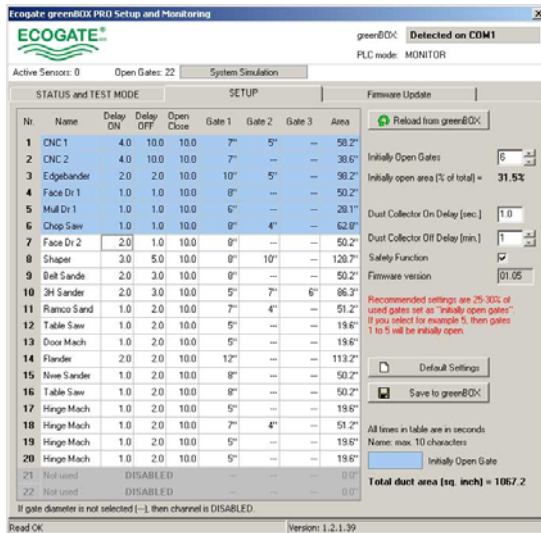
ECOGATE, ECOGATE logo, greenBOX, ECode are registered trademarks of ECOGATE, Inc.,
 Power MASTER is trademark of ECOGATE, Inc. U.S. patent 6,012,199 other patents pending.

Typical Use

BENEFITS	Allows use of smaller dust collector, increases suction (air-velocity) at machines in use, and saves about 70% of electricity.
DESCRIPTION	Cost effective, energy saving solution: greenBOX will adjust performance of your fan by using (optional) variable speed drive. Communication with variable speed drive: analog output (4-20 mA or 0-10V) + Start/Stop contact. Upgradeable firmware via PC.

Specifications

MODEL	greenBOX PRO+, EG 103an (based on OMRON PLC, made in Japan)
SIZE	15" x 19" x 7.5" (38 cm x 46 cm x 19 cm)
WEIGHT	31 Lb (14 kg)
POWER SUPPLY	115 - 230V AC, 50-60 Hz, 100 W max.
ECOGATES compatibility	ECOGATE motorized gates 5" to 16" total 22 channels for gates/sensors (power supply 24 V DC for gates, max .current 0,8A is included), compatible with pneumatically operated gates (with two 24V DC coils, one for opening, one for closing).
INDICATION & MONITORING	Inputs and output status indicated on PLC (inside greenBOX case), status can be also monitored via Windows PC connected via serial channel (up to 30 ft cable, longer cable with optional RS232/485 adapters).
ACCESSORIES (optional)	Motorized Ecogates 5" to 16" (EG205 -EG216), ECode /i sensor (EG309), Power MASTER units with variable speed drive for 10 to 500 HP motors.
INPUT, OUTPUTS	Input for "MANUAL" switch to open all gates and start dust collector, Outputs: free (dry) contact to start/stop variable speed drive, analog output (selectable 4-20mA or 0-10V) to adjust fan RPM via variable speed drive.
SETTINGS (Windows software and cable is delivered with system)	Settings by using Windows PC with serial channel: gate timings (on delay, off delay, opening time), gate diameters, percentage of initially open gates (to maintain air-velocity), dust collector on delay (0-99 sec) and shut-off delay (0 to 99 minutes), variable speed drive minimal and maximal RPM.



Setup page, greenBOX PRO



Optional accessories: EG 309 ECode /i sensor interface, delivered with toroidal coil and holder, one sensor is necessary per one workstation (one workstation can have several gates)

© 2001 - 2005, ECOGATE Inc., 1821 Tyburn St., CA 91204, U.S.A., 1-888-ECOGATE
Phone: 818- 547 4007, Fax: 818- 547 4005, www.ecogate.com, Email: info@ecogate.com

ECOGATE, ECOGATE logo, greenBOX, ECode are registered trademarks of ECOGATE, Inc.,
Power MASTER is trademark of ECOGATE, Inc. U.S. patent 6,012,199 other patents pending.